



Dropstation

A dropstation is a slave system where you can deposit equipment for maintenance, or end-of-service-life equipment. This means it is only suitable for returning equipment, and should always be connected to a rotating vending machine or locker system.

Why automatic distribution of safety equipment?



Increasing safety and availability

Your employees **have access to the equipment any time they need it**. Do you want to specify certain restrictions? You can specify by site, department, job or employee, who may be given access to what equipment, and specify a maximum budget, either by quantity or by monetary amount.



Easing the workload

Vandeputte not only provides an **automated system** for dispensing and returning goods. You can call on us for **all additional related services** (maintenance, replenishing, training, stock optimisation, etc.).



Flexible and expandable

Due to their modular design, our solutions can be expanded to keep pace with your organisation. **Expanding existing systems, or integrating new developments is always possible.**



Cost-effective

Cost efficiency is central to every aspect of our service. The quality of our service and creating value for your company will always be our priority. With a proven Return On Investment, you are assured of a high level of profitability on your investment.

One user-friendly interface and software

All vending machines operate using the same user-friendly software module **fully developed and maintained in-house.**



A **user interface**, which is responsible for the selection and issuing of equipment, as well as returns and replenishment.

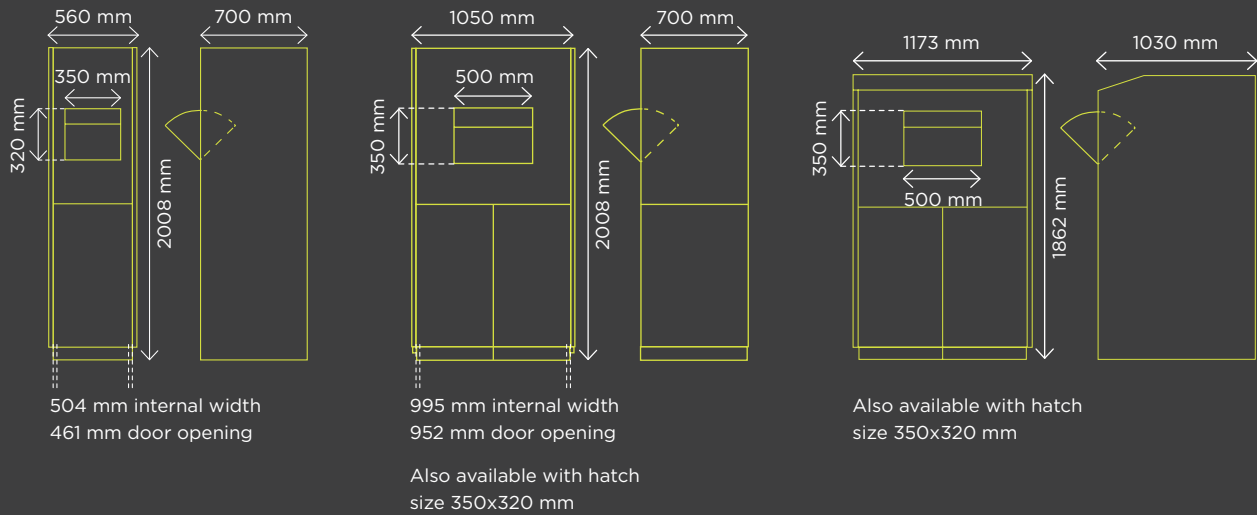


A **management module** for registering the outgoing/incoming products, automatic orders/messages, specific reports, etc.



A **web-based reporting tool** that lets you view up-to-date usage data from all order channels (vending machine, website, telephone, email, etc.) at any time and from any location.

Specifications



Returning maintainable or end-of-service-life equipment



Work clothes to be laundered



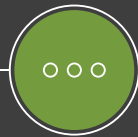
Respirator used



Expired equipment (re-inspection)



Defective equipment



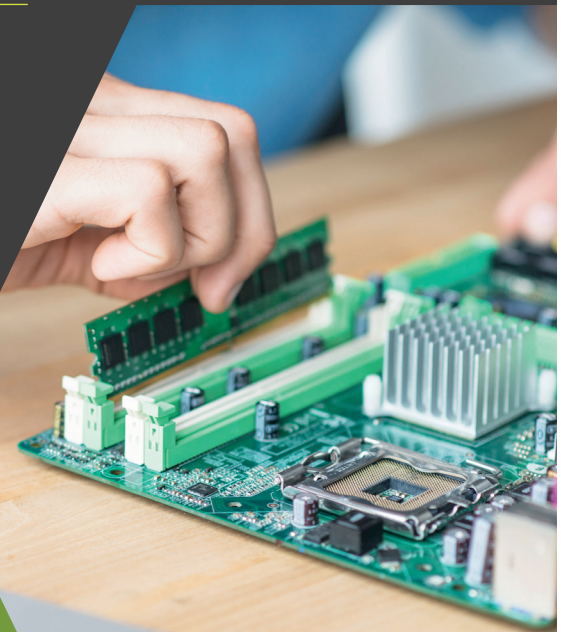
Miscellaneous

Additional advice and services



Vandeputte is a specialist in the field of safety and optimisation of equipment distribution in the workplace. We don't stop at simply providing the installation of your distribution platform, we also take responsibility for its **complete management**.

We are able to ease your workload by providing **a range of services**, to ensure that your vending machines always deliver the right products at the right time.



Vandeputte
Belgium - Flanders
 Binnensteenweg 160
 B - 2530 Boechout
 T +32 (0)3 820 98 60
 F +32 (0)3 820 98 61
 info@vdp.com
 www.vdp.com

Vandeputte
The Netherlands
 Meulenspie 50
 NL-4847 TK Teteringen
 T : 0031 162 48 64 00
 F: 0031 162 42 70 50
 info.nederland@vdp.com